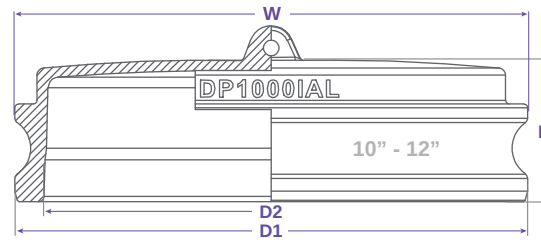
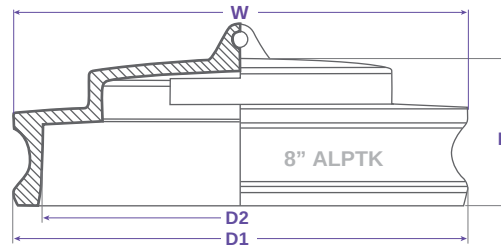
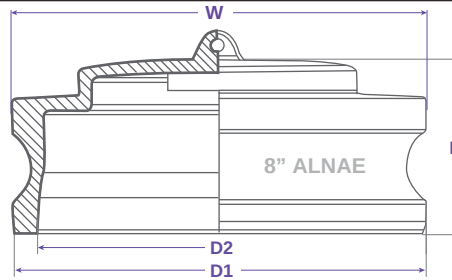
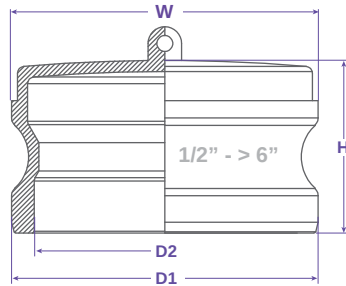




TYPE DP



- NOT DESIGNED FOR PRESSURE APPLICATIONS -

FEATURES & APPLICATIONS:

• **General Uses:**

A camlock fitting is a type of coupling that is used to connecting hose and or pipes together that transfers liquids, powders and granules. A straight through connection is made that maintains the pipe size and allows the free flow of materials being transferred.

Size	Working PSI	D1	D2	W	H	PART #
1/2"	0	0.957	0.736	0.957	1.083	DP050IAL
3/4"	0	1.264	1.032	1.264	1.181	DP075IAL
1"	0	1.445	1.142	1.445	1.339	DP100IAL
1-1/4"	0	2.791	1.386	1.791	1.634	DP125IAL
1-1/2"	0	2.102	1.689	2.102	1.634	DP150IAL
2"	0	2.480	2.063	2.483	1.890	DP200IAL
2-1/2"	0	2.984	2.543	2.984	2.028	DP250IAL
3"	0	3.602	3.201	3.602	2.028	DP300IAL
4"	0	4.705	4.307	4.705	2.087	DP400IAL
5"	0	5.728	5.758	5.728	2.205	DP500IAL
6"	0	6.929	6.929	6.929	2.520	DP600IAL
8"	0	9.091	9.091	9.091	3.642	DP800IALNAE
8"	0	8.921	8.921	8.921	2.854	DP800IALPTK
10"	0	11.372	10.034	11.372	3.135	DP1000IAL
12"	0	13.444	12.337	13.444	3.233	DP1200IAL

WARNING: Cam & Groove Couplings should NOT be used with any compressed gas, including steam or air. Metal fittings should NOT be used with Polypropylene Cam & Groove. Dust Caps and Dust Plugs are NOT designed for pressure applications.

Note: All Seal Fast Cam & Groove Stainless Bodies are 316 Investment with 304 Handles.

TITLE **TYPE DP - DUST PLUG**

DISCLAIMER All drawings and specifications are subject to change without notice. Drawings represent general dimensions of our products. Seal Fast cannot guarantee the dimensions in the drawing will exactly match those in the drawing. This drawing is the property of Seal Fast Inc. Copying or reproduction of this drawing is expressly prohibited.	MATERIAL A226AL
DRAWING NOT TO SCALE	PART # DP...IAL

